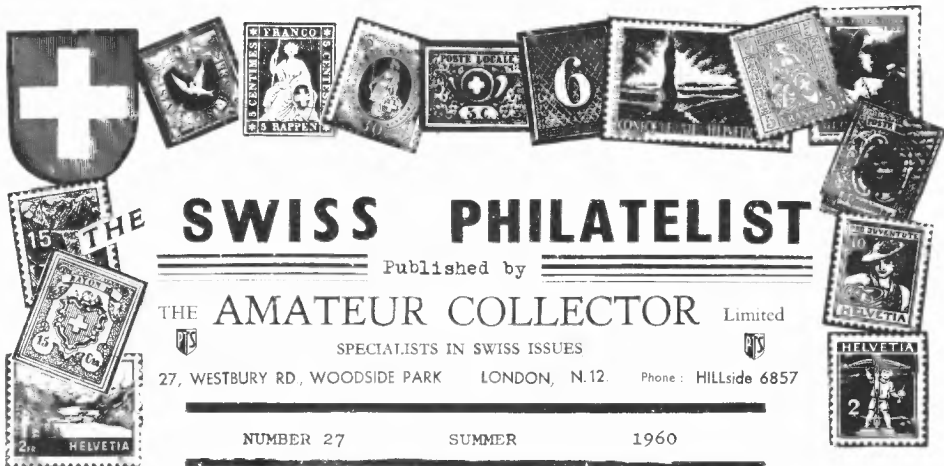


PRICE 8d (10c) PER COPY
(10d. or 12c Post free)



THE SWISS PHILATELIST

Published by

THE AMATEUR COLLECTOR Limited

SPECIALISTS IN SWISS ISSUES

27, WESTBURY RD., WOODSIDE PARK LONDON, N.12 Phone: HILLSIDE 6857

NUMBER 27

SUMMER

1960

ANNUAL SUBSCRIPTION
2/- (35 cents) Post free



This heading is now familiar to all our readers and is more appropriate today than it has ever been before. On April 5th we had to issue a List of important price changes and only 7 weeks later, on June 1st, a further series of upward changes had to be made, some of which concerned exactly the same items affected in April. In fact, some prices are simply running away in Switzerland and many of our suppliers, on whom in the past we could rely in keeping our stocks at an adequate level, have ceased to supply wholesale. They are simply no longer able to buy enough. The good material is like "gold" now and it seems to us that ere long many of our clients will be disappointed when they order certain items from us. Our Buyer has to spend more and more time on the Continent, ranging far and wide to find, in limited quantities, material so essential to satisfy clients' demands.

Repeatedly clients are writing to us how they regret not having taken our advice earlier, when they could have obtained the same material at substantially lower cost; it is obvious that more people will write to us in a similar manner in future years - UNLESS THEY REALISE THEY CAN NEVER HOPE TO BUY CHEAPER THAN AT TODAY'S PRICES!

12 1/2% DISCOUNT

Summer 2/6 IN THE £

On all Orders received

from JUNE 13TH TO JULY 30TH

12 1/2¢ IN THE \$

SAVE 1/8 THE COST

get more for your money

Order now

This SPECIAL OFFER applies also to our APPROVAL SERVICE!!!

The Summer Discount will also be available to clients ordering through our Agents.

This year the INTERNATIONAL STAMP EXHIBITION coincides with the dates of the Discount and we particularly request clients to start sending their orders soon or to leave them until after the Exhibition.

SWITZERLAND—1900



THE ISSUE FOR THE 25TH ANNIVERSARY OF THE FOUNDATION OF THE UNIVERSAL POSTAL UNION

SIXTH
INSTALMENT:

Abbreviations: v. = vertical, h. horizontal, l. = left (of), r. = right (of), btw. = between, v/t = value tablet, * = star shaped spot, ab. = above, bl. = below;

79A 25¢ blue, line perforation.

- 29 Small line on shawl.
79 Small line on top frame ab. D of DE. V. line before DE.
129 Dot outside l. frame at J. V. line in cross.
179 --
30 --
80 Dot btw. JU. Small circle on breast.
130 Small v. line before 1875. Dot under 75.
180 Dot ab. frame & l. of Jubile
31 Dot outside r. frame at arms and one under frame and 9.
81 Dot l. of face.
131 Dot btw. 2nd and 3rd wires.
181 Hairline from top l. corner of v/t to 5 of 25. Diag. line through fr. from 2.
32 Dot btw. 1st and 2nd wires.
82 Dot in 2nd O of 1900 and also one l. of 2.
132 U of Union damaged. Dots ab. r. and bl. 5 of 1875.
182 Diag. line btw. 1st and 2nd wires. Dot in 5 of 25.
33 Dot ab. globe. Dot high in v/t.
83 Mark bl. J. Dot on I of JUB.
133 Dot ab. U of Universelle. H. line from l. frame thro' shawl and globe.
183 Two diag. hairlines from 3rd wire into face. Diag. hairline on pole at arms.
34 Small line at foot of 2 (25) Dot in 1st O of 1900.
84 Large spot on arms & pole. Dot in cross.
134 H. hairline from pole to l. elbow.
184 Dot r. of 2 of 25. Dots bl. frame and Florian.
35 --
85 Dot ab. l. of 8, dot r. bl. 8 of 1875.
135 Dot in v/t ab. 2. Dots in +
185 Diag. line in U of Universelle. Dot outside top r. corner.
36 Dots bl. O of Postale.
86 Dots btw. LE of Jubile. Dots outside l. frame at 25.
136 Small line bl. bottom frame & scroll.
186 Dots in 8 of 1875.

- 37 Small curved line l. of 25.
87 Dot bl. U of Jubile. Hairline through l. frame & v/t to Postale.
137 Dots ab. 7 of 1875 and bl. 5 of 1875.
187 Dots ab. 25. H. line l. bl. 25.
38 Small o on r. forearm.
88 Dot on pole by l. upper arm and 2 dots btw. 7 and 5.
138 --
188 Dots on pole. Dots under wires bl. Postale.
39 --
89 Small o bl. frame & 1st S of Grasset. Dots r. bl. 5 (1875)
139 Dot bl. hyphen.
189 Dots in 5 of 25. Small semi-circle outside l. frame at arch.
40 Dot ab. 5 of 25.
90 Small o on r. wrist. Nick in lower frame at D.
140 Small dots ab. frame & JU.
190 Dots in 2 and ab. hyphen.
41 Dots in 2nd N of Union. Dot l. ab. 2 of 25.
91 Circle on J. Frame bl. GR & r. of D damaged.
141 Dots outside r. frame at globe. Small v. line in covers at r. frame
191 V. hairline through covers at r. frame. V. hairline l. of pole.
42 Dot at lower frame bl. FL. Dot outside r. frame at band
92 Small v. line outside r. fr. at globe. Dot in 2nd N of Union.
142 H. line on pole at arms & * and dot low in v/t.
192 V. line through wings to r. upper arm V. line through globe and shawl.
43 Dots on hyphen.
93 Colourless dot on l. wrist. Dot l. of l of 1875.
143 Dot bl. U of Jubile. Small line from O of Union to 2nd E of SELLE.
193 Dot in 1st L of SELLE, Diag. hairline in top l. of v/t.
44 --
94 Two dots low l. in v/t. Dots bl. 5 of 25.
144 Dots bl. frame and D, two dots ab. globe.
194 Dots ab. hyphen, dots outside l. frame at 25.
45 Two small dots r. bl. J. Dot bl. line bl. 87 of 1875.

- 95 Dot r. bl. V of Universelle, dot in cloud bl. N of Universelle.
145 Two large spots bl. 2 of 25, line bl. LO of Florian.
195 Dots r. of 5 of 25.
46 Dots bl. hyphen.
96 Dots under frame & l. of Florian.
146 Dot ab. globe at l. frame.
196 Dot in 5 of 25. Spiral line bl. arch, bl. Postale, thro' l. frame.
47 --
97 Dots btw. 2nd and 3rd. wires Dots bl. 7 and 5 of 1875.
147 L. eye missing.
197 V. hairline ab. globe.
48 --
98 White spot in arch bl. JU. White area in corner ornament bottom l. in v/t.
148 Dot low in v/t & l. ab. 1900
198 Dot btw. 1st and 2nd wires. 2nd and 3rd wires broken.
49 V. line bl. frame and D of Grasset D. Dots bl. 75.
99 Pear-shaped mark bl. 1st L of Universelle. Dots r. at 2 of 25.
149 Dots in 5 of 25.
199 Dot bl. frame bl. 1st O of 1900. Bottom frame bl. D damaged.
50 --
100 Dot r. bl. insulator r. of pole. Dot bl. T of Postale.
150 H. hairline low in scroll. Dot ab. hyphen.
200 Dot on curved line bl. AL of Postale. (To be continued)

This article has been translated from "Schweizer Briefmarken-Zeitung".

New Issues



Chronicle

Please turn to Page 4.....



SWISS PRINTING INKS

The following notes on printing inks used for the production of Swiss stamps may be of general interest.

Recess-printing is characterised by the raised effect of the lines of the design, which stand above the surface of the paper. In mixing the inks it is necessary to consider good adhesion to the engraving, as well as adherence to the paper, and easy "wipability" from the plate. For this we require fillers (mostly calcium carbonate, magnesia, and barium sulphates). Binders include linseed oil, varnish, paraffin oil and vaseline, all of which are mixed together in special ink mills until a doughy mass is obtained. This filler is then blended with specified amounts of various pigments to obtain the final printing colour.

First proofs of Swiss engraved stamps are taken on small hand presses from individual plates containing one impression and for these proofs 10 grammes of ink are mixed at one time; of these 10 grammes five are pigment and five filler. Numerous colour proofs are obtained in order to give as varied a selection as possible and the final decision rests very largely on the colour which brings out the best in the design.

The Swiss recess-printing inks are consumed in considerable quantities, as each press uses about 15 kg. (35 lb.) per day. Very exact calculations are necessary in order to achieve the same consistency in 15 kilos which was obtained when mixing the trial 10 grammes. Quite apart from the shades, which must remain consistent over long periods (especially in the case of definitives), such factors as resistance to acids and alkalis, and exposure to light must be taken into consideration. A.N.

(Reprinted with permission from "Stamp Collecting").

RECENT BOOKS

THE SWISS HOTEL POST

By Dr. H. Leemann (Published by Sandoz Ltd., Basle) - This superbly produced booklet will leave every Hotel Post enthusiast breathless. The multi-coloured jacket is followed by dozens of photographs of material which few people would believe existed. There are pictures of actual covers, blocks and singles, and items from Hotels the average mortal knows only by name. Magnificently printed on art paper, it should not be missed by anyone who collects Hotel Stamps. The Amateur Collector Ltd., has all available English copies, which cost 10/- Post Free, subject unsold.

Number 28 of the "Swiss Philatelist" will be published in the late Autumn.

THOUGHT FOR TO-DAY

A study of economics usually reveals that the best time to buy anything is last year.

-Marty Allen.

New Issues *Continued from Page 2*

June 1st saw the issue of this year's "1960" Pro Patria Series, together with a Miniature Sheet to commemorate the Organisation's 50th Jubilee, (in 1910 the Pro Patria Organisation came into being with a National Day Collection in aid of Swiss citizens who had suffered in floods - Swiss Fr. 29,000 was collected). Since then similar appeals have been made each year to benefit and finance various cultural and social undertakings, and in all 33 million francs have been contributed. The surcharge on this year's Miniature Sheet is purely for cultural purposes. Designs are once again of Crystals and Fossils, with the notable difference that this year the lowest, 5 + 5c value, is in the Crystal design and the top value has been devoted to the allegorical reproduction of the symbols of various professional groups (see Page 2).



All five values are printed in sheets of 50 on white slightly coated paper with the usual admixture fibres. The first four values are in rotogravure by Courvoisier and the top value is printed in a combined process of rotogravure and recess printing by the PTT Printing Works.

The Set will be valid from June 1st until December 31st, 1960, and will remain on sale until August 31st, 1960, at all Post Offices, and until the end of the year on the Philatelic counter of the PTT. Colours, etc: 5c - smoky quartz (blue, yellow, lt. blue, grey), 10c - Orthoclase (feldspar), (green, pink, grey). 20c - Gryphaea (fossilized shellfish), (red, yellow, grey), 30c - Azurite (red orange, blue, grey). These four values were designed by Niklaus Stoecklin. 50c - symbols of various professional groups (blue & gold). This value was designed by Heinrich Kämpel, Zurich, and engraved by Heinrich Hüsser, of Oberägeri. **MINIATURE SHEET:**

Design as 50c Stamp of Pro Patria Set but in reversed colours, 4 Stamps in a Block of 4 being used for the centre with marginal description on 4 sides. Face value of the Sheet is

Fr. 2.40, of which Fr. 2.- may be used for postage. It will be sold for Fr. 3.-. Size of the sheet is 85 x 75mm. and it is typographed by the PTT Printing Works in Bern. The border design is by Werner Mühleemann of Bern and is printed in brown red and grey, making 4 colours in all for the Miniature Sheet. Periods of sale and validity as for Pro Patria Set. The Miniature Sheet is printed in sheets of 8 Blocks, numbered from 1 to 8 but these will not be sold un-cut.

LONDON INTERNATIONAL STAMP EXHIBITION 1960

Visit
Switzerland
on
STAND 65

Mr. Katcher will be pleased to welcome clients old and new at our Stand during the Exhibition between July 9th - 16th. The Exhibition takes place at the Royal Festival Hall and is open daily between 10a.m. and 8p.m. (Sunday July 10th, 2 - 8p.m. only). Entrance

Fees: Opening Day only 10/- (all day). All other days, including Sunday, 5/- or 2/6 after 6 p.m. We are not sending out free tickets this year but shall be very pleased to refund the 5/- ticket cost to all clients who make purchases exceeding £3 at our Stand. We regret that in view of the extremely high overheads at this Exhibition, purchases below £3 cannot be "rewarded".

A visit to our Stand is the finest opportunity to view material which cannot normally be made available through our Approval Service. If you bring your Wants Lists we shall attend to them while you wait. A visit also affords the perfect opportunity of discussing with us your 'Swiss' problems and will enable us to cater for you far better in the months to come. An International Stamp Exhibition takes place in Britain once every ten years - DO NOT MISS THIS ONE!

WHERE TO FIND US: We may be located on the "40-foot Level" on the 'Green Side'. If you come up the 'Green Side' Staircase you will see our Stand backing onto it.

DID YOU KNOW?

**That Liechtenstein is organising a Stamp Exhibition in Cologne, Germany, from October 21st to 30th this year. A special Postmark will be used to cancel mail at the Exhibition which will no doubt be of interest to many Switzerland Collectors also.

**That The Amateur Collector has established a new Agency in South Africa. They have appointed Messrs. Robemark Philatelists Limited of P.O. Box 11419, Johannesburg, who have a retail shop in Johannesburg's most exclusive shopping district. Clients in South Africa may in future order through Messrs. Robemark or, as in the past, through our London Office. The Amateur Collector Limited has, of course, four other Agents which have been established for some considerable time. They are: Australia - E. Stanley Esq., 29 Clarke Street, Elwood, S.3, Melbourne, Canada - R.E. Elliot, P.O.B. 134, St. Johns, Quebec, Japan - Kanai Stamp Co., 22 Dojima Funadaiku, Kita-ku, Osaka, U.S.A. - G.S. Wildey, Westmoreland, New Hampshire.