

the
Helvetia Herald

VOICE OF THE
Swiss American Stamp Society

FOUNDER: Herbert E. DuRussel

EDITOR: Robert T. Clarke, 1338 Naples Dr., Dallas, Texas 75232

Vol. 5 no. 11

December, 1974

page 1

From the President's Desk

This then is the closing of an era, only to start a bigger and, with everybody's help, better Society. Close to five years ago Herb DuRussel started the S.A.S.S., later assisted by a slate of officers. Over the years the S.A.S.S. grew out from a few local people to the Society we have now, about 185 members strong. This growth was only possible with the help of so many members who showed interest, won new members and placed articles in the Helvetia Herald. From this place I thank you all for your participation. Also, I thank the people "on the top" for doing such an outstanding job, without which a president and vice president never could have accomplished anything. I mention especially our Secretary-Editor, Bob Clarke for the way he kept his promise to get at least 10 Helvetia Heralds out in one year, with the interesting content. Furthermore, Charles LaBlonde needs a plug for the work he did as Treasurer. And last but certainly not least Felix Ganz, who had the tremendous task in keeping the circuit rolling. I am sure that I speak in name of all members by saying a special "thank you" to these three men.

This is all past with this last number of the Helvetia Herald. Now we look to the future: a new Society comprised of the S.A.S.S. and the Helvetia. Again, a lot of people proved their interest by issuing suggestions in answer to information, written in the two Societies' monthly bulletins. At the time of this writing, I do not know yet who the new officers will be, but with your help, the new slate will have no trouble in making the new Society a great success for all those in the United States, and for that matter worldwide, who have an interest in the Swiss Philately.

I wish you all happy holidays and a very good 1975. See you all in the new Society.

Jan Winder

SASS - Helvetia Election Results

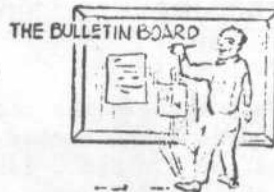
The officers of the American Helvetia Philatelic Society for 1975 are:

President:	Jan Donker
Vice Presidents:	Doug Casper Karl Sharp Harlan Stone
Secretary:	Chuck LaBlonde
Treasurer:	George Wettach

Our President, Jan Donker has also made the following appointments:

Editor:	Bob Clarke
Sales Circuits:	Felix Ganz
Auctions:	Henry Gitner
Librarian:	Bob Scheuermann

WANTED: Correspondence with members who have surplus mint and/or used Bundesfeier cards; pre-1960 Swiss stamps with control numbers, and stamps with "Ausser Kurs" overprint. Please write to: Karl H. Sharp, 1336 White Oak Drive, Verona, Pa. 15147.



CAMPIONE D' ITALIA - Zumstein Nos. 1B-5B, the perf. 11 issue. Mint NH set. Zum. cat. val 25 Fr. Net price \$7.50 three sets available of this seldom seen item. Robert T. Clarke, 1338 Naples Dr., Dallas, Tx 75232.

The MARKETPLACE



ANOTHER NICE COLLECTION OFFER: Abundant seated Helvetias/mint sets/used sets/odd singles to fill in what you need/not checked for specialty items. Price only 1/3 last years Scott catalog. All have gone up in Zumstein & will increase dramatically in Scott according to press releases I've seen. \$900.- Catalog value, net \$300.- Detail available from: D. Casper, 6515 Romaine St., Hollywood, CA 90038

New Masthead Art Work Needed

The Editor puts out a call for "HELP" with some new art work for the masthead of the AHPS monthly bulletin "TELL". Any sketches and ideas by all you secret artists out there in AHPS land will certainly be welcomed. Please send your cards and letters with ideas to Robert T. Clarke, 1338 Naples Dr., Dallas, Texas 75232. Thanks.

News from the Chapters

NEWS FROM THE NEW ENGLAND CHAPTER

At the November meeting Mr. Fred Lesser held a very interesting talk about methods of printing stamps and mis-prints on Swiss stamps. Many pictures and stamps were shown for clarification. Thank you, Fred. Two chapter members showed material in the WALPEX 1974 annual stamp exhibition of the Waltham Stamp Club. Dave Beaver went home with a silver and Jan Donker got a bronze. The next New England Chapter meeting will be on December 18, 1974 at 7:30 p.m. Those who want to attend please contact Jan Donker in Burlington, Mass., telephone 272-4623.

AHPS CHAPTER FORMING IN NORTHERN NEW JERSEY

Since late 1966 the New Jersey area members of Helvetia have held monthly meetings at the Fair Lawn Arts Center, 12-56 River Road, Fair Lawn, New Jersey, without interruption. In order to continue their activities, they have applied to AHPS for status as the Northern New Jersey Chapter No. 1. Any members of AHPS in the area who are interested in participating in the Chapter should contact Harlan Stone, 48 Division Ave., Summit, New Jersey 07901. William B. Martin of Clementon, N.J., will speak on Swiss 20th century plate flaws and varieties up to 1960 at the monthly meeting in Fair Lawn on Dec. 17 at 8 p.m.

SOUTHERN CALIFORNIA CHAPTER OF AHPS

An effort has recently been made to begin a chapter of AHPS in southern California. Since there are an estimated 20 members in the area, it is quite possible that we will soon hold our first meeting. The merger of SASS and Helvetia along with new memberships adds even more to our number. Letters containing all of the information on the new Chapter have been mailed to local AHPS members. If you did not receive a letter and you are a collector in southern California, please let me know. Those who have received the letter may let me know and more plans will be made. I'm looking forward to the success of our new Chapter. Doug Casper, 6515 Romaine St., Hollywood, Calif. 90038

A SASS - AHPS Welcome to the following new members:

Edwin N. Asmann
740 N. Green Bay Rd.
Lake Forest, Ill. 60045

Richard T. Iffland
1529 Robbins St.
Santa Barbara, Cal. 93101

Albert W. Spiller
P.O. Drawer 0
St. Augustine, Fla. 32084

Ernest J. Cianci
121 Farmington Ave.
New Britain, Conn. 06053

Theron E. Javete
1925 De Ovan
Stockton, Cal. 95201

Ms. Pat Williamson
320 Argonne
Kirkwood, Mo. 63122

Lois L. Corbin
501 E. Seminole, Apt 7
Lake Wales, Fla. 33853

Frank Simonetti
P. O. Box 706
Brooklyn, N.Y. 11237

Isaac Goodman
60 Glendale Ave.
Livingston, N.J. 07039

Swiss Sales Circuits, 1974 - 1975 Season : Report No. 2

Coordinator: Felix Ganz, Apt.3303, 1130 S.Michigan Ave.,Chicago (IL)60605.

The circuits, after only six weeks of operations, are doing well. Most are moving nicely, and over \$750 had been sold by November 25. The first books are reported 100% empty (an envelope with World War I soldier stamps on cover), and the first reports of "prices are too high" have come in. Well, dear friends, I warned you at the outset; and those of you who are now armed with the new Zumstein catalogues will now see that values are up and up and up. -- If sales continue at the current rate, by the way, we will surpass last year's total by the end of March!

Over one hundred members are now requesting materials -- and that is not only a job, but quite a responsibility as well because at the moment over \$5600 in net sales value is circulating in twenty-one different circuits, each to usually from eleven to fifteen members. Only one circuit each of early stamps, covers and FDC, or military items, and only one half circuit of postal stationery could be assembled, however, and unless more materials from these categories is entered, those of you desiring items of these types will not see much materials -- if anything.

It is now also possible, by the way, to send some packets to Canada and Mexico -- so members in these countries may now apply (or reapply) as well.

If any members have received three circuits and have "struck out" (i. e.: zero takes) on all of them, then either that member's specialization is too great, he is too advanced (and has everything), or has not been accurate enough in describing his wants. We try -- but miracle men we are not. One final request: please keep the circuits moving, by SPEC.HANDLING.

Special Handling Really Does Work !!!

Sales Circuit participants please use Special Handling when sending the circuits on to the next person, it does speed things up considerably. One parcel that left Dallas on Nov. 27 was received in Baltimore on Dec. 2 ! That's only four days in transit including Thanksgiving, Sat. & Sun. Another parcel without Special Handling took 11 days to go North to South in California. The \$0.25 is well spent.

SWITZERLAND - SPECIALIZED

We have just acquired a delightful, specialized collection of Switzerland which includes such rarely seen items as Scott B2b, B2 interspace pair, C25a, League of Nations 3F and 10F in used plate number singles, Labor Bureau first issue mint singles and the 3F, 5F, and 10F in USED BLOCKS of four, plate varieties, classics, etc. Want lists are invited by Scott or Zumstein or request our Price List.

FRANK GEIGER

ASDA APS SASS SPA ATA

One Prospect Street Ridgewood, NJ 07450

P.S.: If you have any interest in Belgium, Netherlands, Luxembourg or Colonies, our 52-Page 1975 Price List with over 20,000 prices is available for \$1 (deductible).

SWITZERLAND

Comprehensive 35 page Price
List covering complete sets,
singles and First Day Covers.

Please enclose 10¢ postage

SWISSPHILA

P.O. Box 964, Linden Hill Sta.
Flushing, New York 11354



Switzerland

Our Specialty

JUST OUT, OUR 1975 SWISS PRICELIST

Write for yours today. We'll also enclose our current monthly bulletin full of Swiss data and offers.

SWISS APPROVAL AND WANTLIST SERVICE

Personal service always, and prompt! Your APS # or other ref. please. We stock also most Swiss specialized catalogs, albums, and supplies too! If it is Swiss material you collect, we have it or can get it. Swiss Mail Auctions held 3-4 times a year. We also buy Swiss material, esp. want specialized items, and 19th Cent.

SWISS SOLDIER STAMPS!!

We carry a quite complete supply of these fascinating stamps and have published a Guidelist for classifying and mounting these issues, for \$1.00. OR, send \$9.00 for our special collection of 100 Diff. Swiss Soldier Stamps, and we'll include the Guide free. We also have an article on the history of these interesting stamps, which will be sent free with any of the above offers, or ordered alone, send stamped addressed envelope.

Edwin L. Chalfant

RIVIERA STAMPS

MEMBER OF APS SPA SASS, HPS

P.O. Box 6250
(196 So. Lassen Drive)
Santa Barbara, Calif. 93111
Phone: 805-967-5243

Zumstein+cie



Inhaber Hertsch + Co.

ZUMSTEIN DISPOSES OF A FINE STOCK OF EUROPEAN AND OVERSEAS STAMPS AND RARITIES!
For once try Zumstein and you will find what you are looking for.

New edition: 31st August, 1974

Europe Catalog, 1975, over 1400 pages, German text, illustrated, price \$25.00.

Switzerland/Liechtenstein Catalog, 1975, pocket size, over 300 pages, German-French text, illustrated, price \$3.00.

SWITZERLAND/LIECHTENSTEIN SPECIALIZED CATALOG, 1975, XX1st edition, nearly 800 pages, German text, the long-awaited work for the specialist. price \$19.50.

For the Swiss Specialist: Berner Briefmarken Zeitung, always bringing interesting features to you. Annual fee: Swiss Francs 21.00

Sole Agency for the US: Ronald Frank Co., Inc., Lovell Street & Route 202, Lincolndale, New York 10540.

Zumstein & Cie, prop. Hertsch & Co., P.O.B. 2585, CH-3001 Bern, Switzerland



New Prices on Swiss National Fête Day (Bundesfeier) Cards

Member Karl Sharp writes, probably suppressing a wishful sigh: "...I am attempting to put together a mint as well as a used copy of each of the Bundesfeier cards. Methinks, however, that I should have done this years ago....."

Dear Karl, and dear other fellow collectors: yes indeed; if there ever were "famous last words", these are it. The Zumstein Specialized (1975) and the Tanner Catalogue (formerly called First Day Catalogue, but now sailing under the name of "Special Catalogue"), also 1975, just arrived.....and a comparison of their suggested NET sales prices with those of the 1965 Postal Stationery Zumstein as well as with the prices Zumstein suggested about 2½ years ago cause disbelief, if not consternation. Sure, it is nice to know that one suddenly owns items, not too long ago acquired at a discount from the 1965 catalogue that now suddenly are \$100 (plus) items; but it is both sad and somehow unbelievable that the same items which were almost sneered at ten years ago now suddenly are the objects of wild speculation. In auctions in Switzerland some of the suggested catalogue prices are already surpassed, and the only moral that can be gleaned from all of this might be: collect the unusual, and wait.

Below are given a few random selections from Fête card prices, translated into dollars at a 4:1 ratio for 1965, and 3:1 for now:

CARD # and Year:	Z '65	Z '75	T '75	CARD # and yr:	Z '65	Z '75	T '75
1 1910*	0.12	0.35	1.70	50-51(10) 1928*	.16	.85	1.70
1910e	.15	.70	3.40	idem, e	.17	1.20	3.40
7-11(each) 1914*	.27	1.35	1.70	52-53(25) 1928*	2.--	13.50	17.--
1914e	.30	1.70	5.--	(each) idem e	2.--	16.50	13.50
20-24(each) 1918*	.18	.85	1.70	54-55(40) 1928*	2.--	17.50	23.50
1918e	.18	1.--	2.70	(each) idem e	2.--	20.--	20.--
28(Pax Stp) 1919*	.60	1.70	5.--	1931,air 25c.*	3.75	42.--	65.--
1919e	.60	2.--	8.50	idem,each e	2.75	50.--	52.--
33(Turner) 1920*	1.--	33.50	5.--	1931,air 40c.*	4.--	60.--	85.--
e	1.--	40.--	10.--	idem,each e	3.--	68.--	65.--
39 (Fire) 1923*	.22	1.--	1.70	74-75(ea) 1932*	.18	3.50	1.70
e	.22	1.35	3.--	idem e	.18	5.--	2.75
46-47(10c) 1927e	.19	.85	3.50	76-77(ea) 1933*	.18	3.50	1.70
48-49(20c) 1927*	3.50	\$145.	\$170.	idem e	.18	5.--	2.70
(each) idem 1927e	3.75	\$160.	\$185.	84-85(ea.) 1937*	.15	.95	1.70
				idem e	.15	.95	2.00

From the rather different notations in Zumstein and Tanner one may rightfully deduce that these cards have not yet reached "settled" levels, and it will be most interesting indeed to see what Zumstein will do when the long-awaited new edition of the Postal Stationery Catalogue will finally arrive in May, 1975. Felix Ganz

SWISS EXPRESS LABELS

by: Ivan Tillen (continued from November)

Type 21 This is a routing label, size 105 x 74 mm. It is gummed on the back and is affixed to the outside of a larger envelope into which the Express item is put. It is then sent by any train or station-master who accepts it after hours or at week-ends and thus is transported by non-postal train personnel in the

absence of a T.P.O.

All the directions appear in three languages. In the blank space is written the routing instructions, that is to say by which train it is to be transported by naming the station it is to go to and the number of the train by which it is to travel.

Type 21A
Red

Schweiz Post-erwartung - Postes suisses - Poste svizzere

E Posterteilsendung
Expres postal
Espresso postale

zu befördern durch Bahnpersonal.
à transporter par le personnel du chemin de fer
da trasportare per mezzo del personale ferroviario

mit Zug
dans le train No 3922
del treno

nach pour per
..... Glarisegg / Steeborn.

Umlad in
Transbordement à
Transbordo a
Umlad in
Transbordement à
Transbordo a

auf Zug
dans le train No 1249
nel treno
auf Zug
dans le train No
nel treno

P 243. - XI.50. A7 (105x74) - 00035.

Over the years this label appears to have changed both in its wording and in its Express rectangular section.

The two sub-types (B) and (C) have been

in use in March, 1957, and August, 1964, respectively. To save enumerating the differences I illustrate the actual printed labels and the differences in design will then become apparent.

Type 21B
Pink

Schweiz. Post - Postes suisses - Poste svizzere

E Posterteilsendung
Expres postal
Espresso postale

zu befördern durch Bahnpersonal
à transporter par le personnel du chemin de fer
da trasportare per mezzo del personale ferroviario

mit Zug
dans le train No
del treno

nach pour per
.....

Umlad in
Transbordement à
Transbordo a

auf Zug
dans le train No
nel treno

Umlad in
Transbordement à
Transbordo a

auf Zug
dans le train No
nel treno

P 243 - III 57 2 000 000 A 7 (105 x 74) - Qu. O 67

**Post-Eilsendung
Exprès postal
Espresso postale**

**Post-Eilsendung
Exprès postal
Espresso postale**

**SCHWEIZERISCHE POSTVERWALTUNG
POSTES SUISSES - POSTE SVIZZERE**



*1955 (Type 22A)
Wording above PTT badge*



**Schweizerische PTT-Betriebe
Entreprise PTT suisses
Azienda PTT svizzeri**

1966 (Type 22B)

**Post-Eilsendung
Exprès postal
Espresso postale**

**Post-Eilsendung
Exprès postal
Espresso postale**



**PTT-Betriebe
Entreprise des PTT
Azienda delle PTT**

1968 (Type 22C)



**Schweizerische PTT-Betriebe
Entreprise des PTT suisses
Azienda svizzera delle PTT**

1969 (Type 22D)

In the CENTRE at the bottom of covers nothing for Types C and D but: — Type A: — P 522 - III.55 and for Type B: — PTT 128.38 IX.66 B5 (250 x 176) QU 60.

Some of the interesting differences in the blocks illustrated are mentioned here: —

- (1) In the words postal and postale of the 1955 Types the A's are *a* instead of a as in all other types.
- (2) The SIZE of the rectangle of the 1955 Type is 70 x 34 mm. as compared with 53 x 36 mm. of all the other three later types.
- (3) Flatter type of printing in 1966 Type onwards (length of E 3 mm. compared with 2 mm. in 1955 Type).
- (4) Border of rectangle slightly narrower in 1955 printing.

In all cases the El/ and words *Exprès* and *Espresso* are in heavier (thicker) type printing. This does not seem to have changed over the years.

A final interesting point of difference observed if the illustrations of the covers are closely examined is that we have DOUBLE LINES horizontally and vertically splitting the pink covers into three main sections ONLY in the early cover of 1955 which I assume is the first printing as I have not seen an earlier printing date.

The PTT Badge appears UNDERNEATH the 3 line wordings only in the 1955 printing.

In all other printings the position of this badge is to the left of the three lines of wording.

Type 23.

Apparently there has been in use in Switzerland for some considerable time a RUBBER-HAND-STAMP which has been used in conjunction with a RED-INK PAD to produce a stamp of Express identical to one of the previously described types of labels.

The size of this so called label is 39 x 13½ mm. Three collectors like myself who possess examples of this rubber hand stamp on covers are inclined as I am to the belief that this red ink rubber hand stamp must be applied (either at the frontier or in the receiving post office) to all(?) incoming foreign Express mail.

The earliest use I have seen of this application is March, 1964, as seen on my cover from the U.S.A. to Switzerland. For illustration see opposite.

I also possess three Italian covers to Switzerland which possess this Type 23 and I am informed from Switzerland that about HALF the Express letters coming from Italy to Switzerland have this stamp especially if they do not have an Italian PTT (or private) **sticker** on them. Examples on cover are also known

from each of the following countries: — Monaco, Tunisia and Yugoslavia. All are coming from the South, so perhaps this stamp in all these instances is applied at the frontier Chiasso. When the cover comes from abroad (such as my example from the U.S.A.) I should think probably it is applied at the receiving office at the airport as my cover came Air Mail and the stamp is applied **over** the Gettysburg stamp. The purple hand stamp was of course applied in America as the black Italian ones are applied in Italy before reaching Chiasso. This is all the information I have on this interesting red ink rubber handstamp designated by me as Type 23 since I do not know the exact date of introduction of it.

Type 24

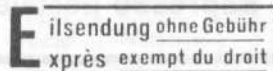
Size of label: — 48 x 17 mm.

The only information I have on this type is that it may be a Express label used on official letters. It has the new wording: — "ohne gebühr" and "exempt du droit" which is appearing for the first time on any Express label.

Apparently this Type 22 has been printed with both rouletted and ordinary perforation between labels. Mr. Walker has a perforated one and I have a rouletted one.

The latter one is a much paler red. The tab at the foot of the latter reads PTT 236.33 (1217 c) x 11.61 (50,000 x 10).

Apparently this rouletted label has not been printed since 1961 according to Mr. Rutherford's latest information. He says perhaps the 1217 c on the tab is the old number.



Type 24

Type 25

Size of label: — 45 x 15 mm.

A self-adhesive label with rounded corners as illustrated below.



Type 25

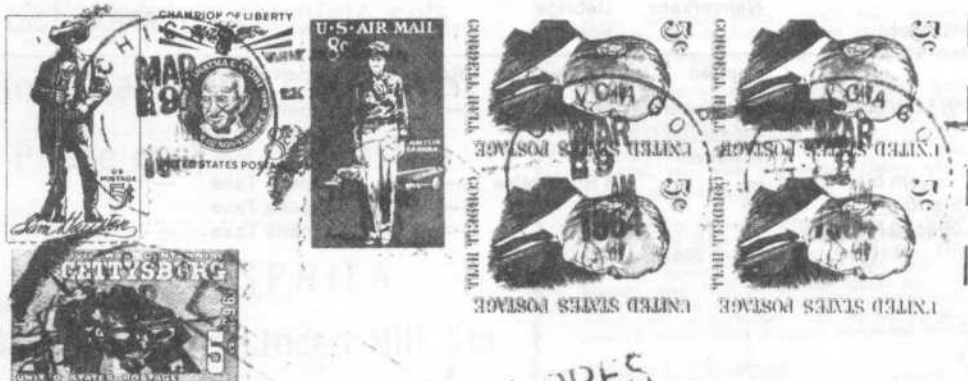
Type 26

This new type Express label shown to size below would appear to be the latest OFFICIAL one in use. Type 23, I have been informed by Mr. Rutherford of Baserdorf, that this is a privately printed label and not printed by PTT. Type 26 with this new wording of "ohne taxe" and "exempt de la taxe" has only been seen to date rouletted. The printing details from the Tab of a complete strip so far seen is PTT 236.33 1.69

50,000 x 10 format 1/2 D9 (48 x 17) OU 80 50.
The January 1969 printing appears to be the only issue so far of this current label.

Eilsendung ohne Taxe
xprès exempt de la taxe

Type 26



SPECIAL DELIVERY
VIA AIR MAIL

EXPRES

Switzerland

MRS. B. GANZ - KERN
SCHNEGGENBÜHL
OBERHOFEN - THUN
BERN

Type 23: EXPRES in red, handstamped

ADDENDUM

I have now seen Type 1 with the wording in reverse, i.e., what was at the top is now at the bottom: Type 1A. I have also seen a cut-out of

the centre line on a postcard, of Type 1A, this new type—it is from the new type because part of the wording of the lower line which is DURCH EXPRESSEN and is in *serifs* and is visible at the foot of the label thus:—

Par expès
Durch Expres

Part of Durch Expres visible on narrow strip

This is from Type 1A which is:—

Per Espresso		Durch Expres
Par expès	instead of	Par expès
Durch Expres		Per Espresso

ACKNOWLEDGEMENTS

The writer is indebted to many members of the Helvetia Philatelic Society of Great Britain for help in providing additional information regarding dates of usage, etc., of these labels, especially the following:— Dr. Felix Ganz of Chicago, Mr. Walker of Edinburgh, Mr. S. Beale of Devon, Mr. M. Rutherford of Baserdorf, Switzerland. I am also indebted to the publishers of *Die Post-Vennerk-Etiketten Der Schweiz von 1882 bis 1943* namely the only Swiss publication of Labels in

Catalogue form ever produced and published by Ed. Rutterman, for help in arranging the order of classification chronologically of the types up to 1943.

In the Zumstein BBZ of 1971 there was a most interesting table of Swiss Postal Rates except for printed matter and foreign rates. These I understand will appear at a later time.

The table is reproduced on p. 392 and illustrated in graphical form on p. 393.

Table of letter rates, etc.

Taxen für Briefe, Postkarten, Einschreiben und Express

Gültig ab:	Gewicht:	Briefe	Uebrige	Postkarten	Einschreiben	Express
		Nahverkehr	Schweiz			
		Rappen	Rappen	Rappen	Rappen	
1. 10. 1849	½ Loth bis 1 Pfund	Ortspost in grösseren Ortschaften	4 Briefkreise	—	doppelte Taxe	—
1. 1. 1852	½ Loth bis 1 Pfund	—	3 Briefkreise	—	doppelte Taxe	—
1. 7. 1862	bis 10 g	5	10	—	doppelte Taxe	—
	über 10 bis 250 g	10	20	—	doppelte Taxe	—
		(bis 2 Std.)				
1. 1. 1868						30 Rp. (nur für Einschreibebriefe)
1. 9. 1868						30 Rp. (auch für gewöhnliche Briefe)
1. 10. 1870				5		
1. 9. 1871	bis 15 g	5	10	5	10	
	über 15 bis 250 g	10	20			
		(bis 2 Std.)				
1. 11. 1884	bis 15 g	5				
	über 15 bis 250 g	10				
	bis 250 g		10	5	10	
		(bis 10 km)				
1. 12. 1891	bis 250 g	5	10	5	10	
1. 1. 1918	bis 250 g	10	15	7½	15	30
1. 1. 1921	bis 250 g	10	20	10	20	60
1. 3. 1934	bis 250 g	10	20	10	20	40
1. 1. 1947	bis 250 g	10	20	10	20	60
1. 3. 1948	bis 250 g	10	20	10	20	80
1. 1. 1963	bis 250 g	10	20	10	30	80
1. 4. 1966	bis 250 g	10	20	10	30	150
1. 11. 1967	bis 250 g	20	30	20	50	150

These rates are illustrated graphically on p. 393, facing

Since publication of part I of my article in *P.H.I.*, pp. 266-280, July 1973, I have obtained further information about dates of printing (as given on tabs) for Types 14 to 17, as follows:

Small Labels (10 per strip):—

Type 14 (Rouletted Perf.)

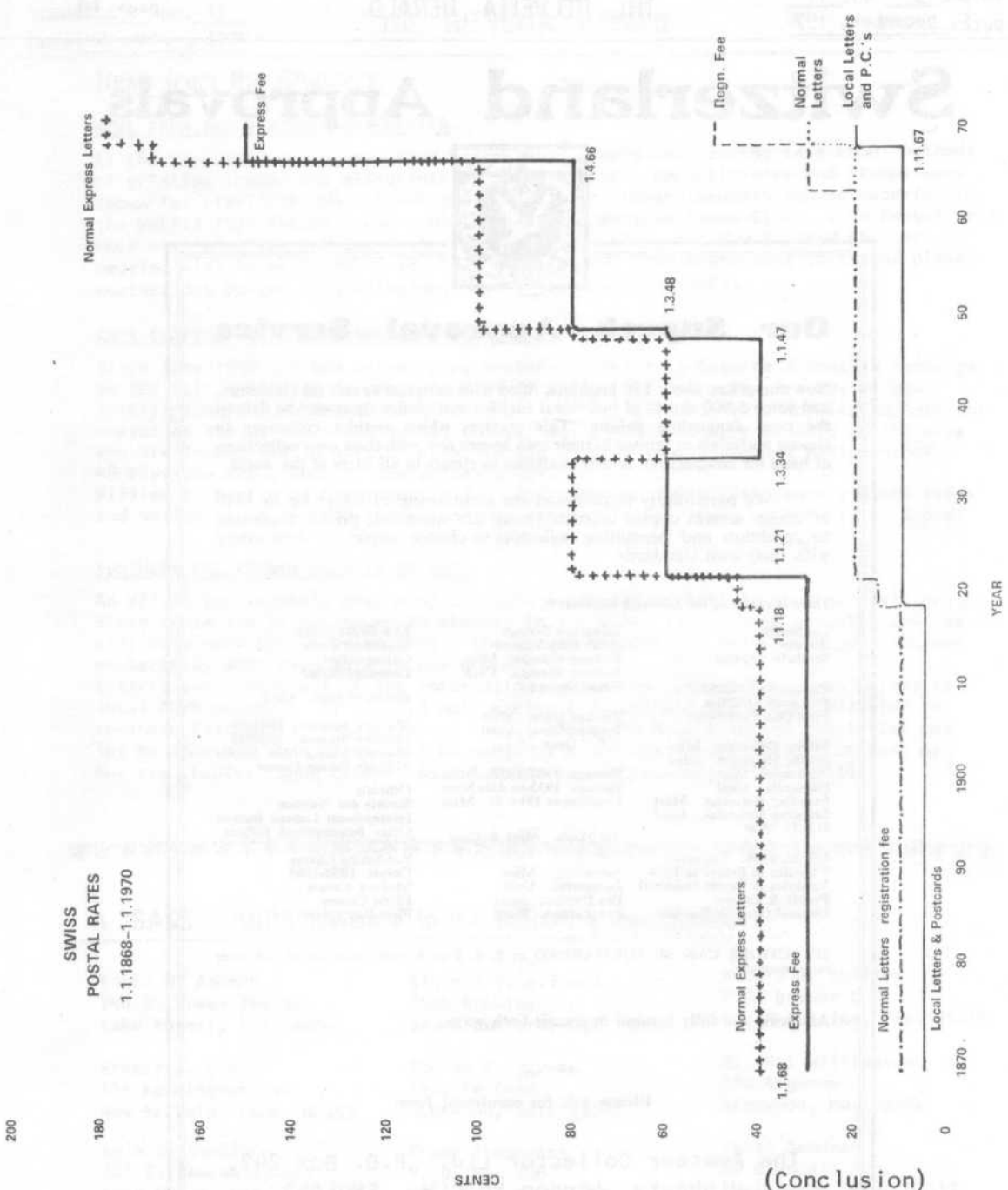
Jan. 1959
June 1963
Oct. 1964
March 1967
Sept. 1969
Feb. 1971
June 1947

Large Labels (5 per strip):—
Type 15 (Thin E)

Type 17 (Thick E) Perforated
Type 17 (Thick E) Rouletted

June 1953
Dec. 1939
Nov. 1942
Feb. 1945
Oct. 1951
Sept. 1960
June 1963
Oct. 1964
Mar. 1967
Sept. 1969
Feb. 1971

Type 16 (Ordinary perf.)



Switzerland Approvals



Our Superb Approval Service

Now comprises about 150 booklets, filled with material to suit all collectors, and some 5,000 sheets of individual rarities and choice 'morsels' to delight the most demanding palate. This service, which enables collectors to choose materials at leisure in their own homes and with their own collections at hand for comparison, is now available to clients in all parts of the world.

We particularly recommend the scrutinising of issues up to 1910 of which several copies of each stamp are mounted, priced according to condition and permitting collectors to choose copies in conformity with their own standards.

There is choice of the following sections:

Cantons
Rayons
Strubelis 1854/62

Postmarks 1843/82
Postmark Oddities
First Day Postmarks

Sitting Helvetias. Mint
Sitting Helvetias. Used
Numerals. Mint
Numerals. Used
Standing Helvetias. Mint
Standing Helvetias. Used
U.P.U. 1900

U.P.U. 1900. Varieties
Varieties & Errors to 1914
Varieties & Errors (modern)
Proofs & Essays
Unusual Items & Rarities

Telegraph Stamps
Hotel Post Stamps
Railway Stamps. Mint
Railway Stamps. Used
Fiscal Stamps

Postage Dues. Mint
Postage Dues. Used
"T" Dues

Postage 1907-1933. Mint
Postage 1933-to date Mint
Landscapes 1914-49. Mint

Air Mails. Mint & Used

Juventutes. Mint
Juventutes. Used
Pro Patrias. Mint
Pro Patrias. Used

Tête-Bêche Pairs
Se-Tenar Pairs
Gutter Strips
Language Strips

Blocks of Four. Used

Military Stamps. 1914/18
Military Stamps. 1939/45
Military Stamp Min. Sheets
Military Stamp Covers

Officials
Societe des Nations
International Labour Bureau
Other International Offices

Pre-Stamp Covers
Covers 1850-1908
Modern Covers
Flight Covers
First Day Covers

SELECTIONS CAN BE FORWARDED at 2, 4, 6 or 8 week intervals to suit your requirements.

All items are fully insured in transit both ways.

Please ask for enrolment form

The Amateur Collector Ltd. P.O. Box 242,
Highgate, London N6 4LW, ENGLAND

*All the knowledge
about
Swiss Stamps
at your fingertips*

-- IN ENGLISH !!

THE AMATEUR COLLECTOR LTD. (H. L. Katcher)
"Household Name for Swiss Stamps"
P.O. Box 242, HIGHGATE, LONDON, N6 4LW.

THE AMATEUR COLLECTOR LTD.
**SWITZERLAND
CATALOGUE
1975**

(Jointly edited by L. N. & M. Williams,
R. F. Bulstrode, O.B.E. and H. L. Katcher)

PLACE YOUR ORDER NOW

PUBLICATION DATE DECEMBER 1974

*This edition truly reflects market movements, as there was no appreciable change in currency exchange rates. Its study will show that, while Property and Stock Markets tumble, **SWISS STAMPS MARCH ON!***

The majority of price increases are in the 25% to 40% region, but cases of 100% and 200% are not unknown.

7,319 price increases

34 price reductions

312 additional prices listed

In times like the present it is essential to be fully informed of market movements, be it for buying or selling purposes. Our 1975 Catalogue provides this service for you.

By popular request Rayon Stones have now been incorporated to assist the advanced collector.

We still subsidise this Catalogue; considerably higher printing and production costs have not been fully passed on to the user.

**YOUR SWISS COLLECTION IS INCOMPLETE WITHOUT
THE AMATEUR COLLECTOR'S 1975
SWITZERLAND CATALOGUE**

OVERSEAS CLIENTS PLEASE NOTE

The post free price of \$6.50 is for sea mail delivery. As sea mail has deteriorated over the last few years (4-6 weeks en-route is common), clients who wish to receive their catalog quickly should add \$1.20 (making a total of \$7.70) for AIR MAIL dispatch. OR:

for delivery in January with:
H.L. Lindquist Publications, Inc.
153 Waverly Place, New York,
New York 10014 - price \$6.50

ORDER FORM

To: THE AMATEUR COLLECTOR LTD.
P.C. Box 242, Highgate, London, N6 4LW

NAME

ADDRESS

(BLOCK LETTERS PLEASE)

Kindly send me copies of your
1975 Catalogue for which I enclose

Price (incl. post and packing):
U.K. & Europe £2.22
Overseas: £2.70 (U.S. \$6.50)

Important: Please keep Catalogue orders strictly separate from all other transactions. This will avoid mistakes and delays as different departments are involved. We thank you in advance.

CUT HERE



Schweizerische PTT-Betriebe
Entreprise des PTT suisses
Azienda delle PTT svizzeri
Swiss PTT Enterprise

Pro Juventute 1974

Poisonous forest plants

SERVICE IS OUR MIDDLE NAME



Wertzeichenverkaufsstelle
Service philatélique
Servizio filatelico
Philatelic office
CH-3000 Bern, 031 62 27 28

